



MIXMOVE

Enlightening Logistics

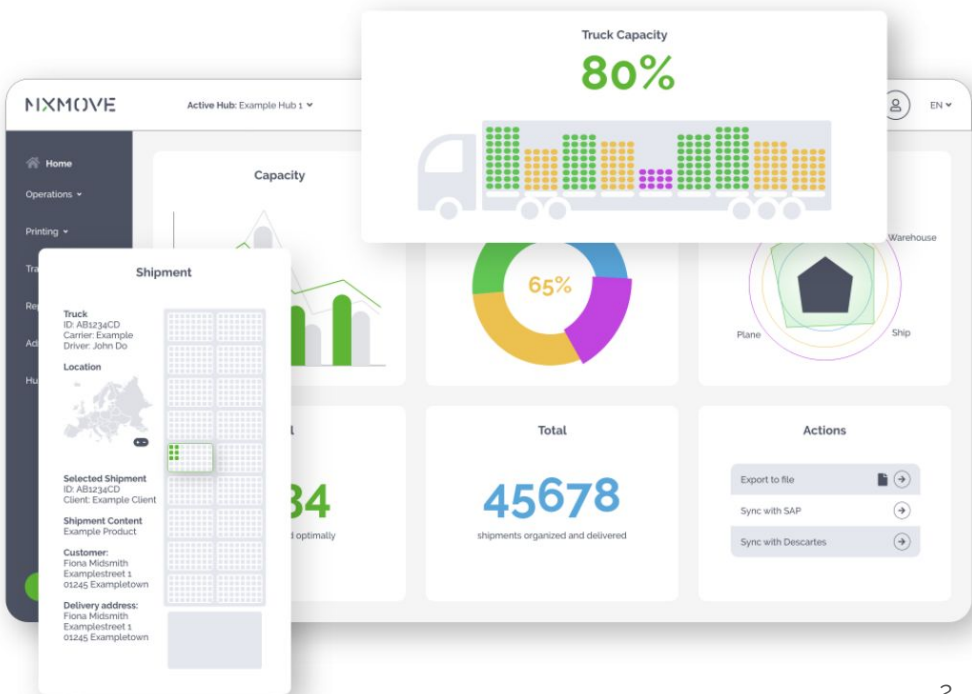
BVL
26th January 2022

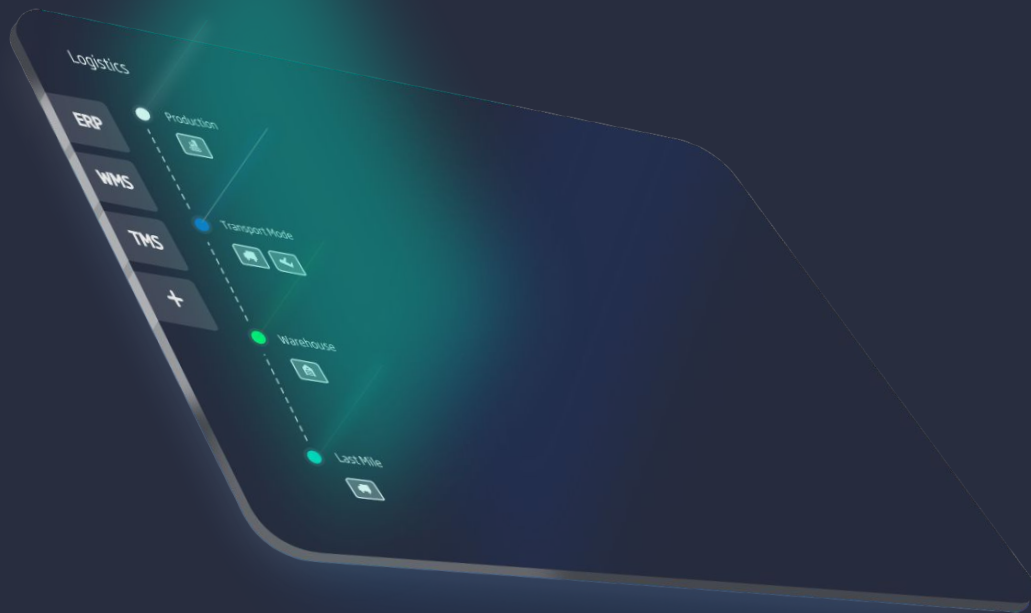


Who we are

An award winning collaborative cloud platform enlightening logistics data, all with the aim of making logistics processes connected, efficient and sustainable.

- **Norwegian based** company established 2017, subsidiary in Portugal.
- Provides **one cloud solution** that revolutionizes the loading of goods.
- Making logistics processes **efficient, connected** and **sustainable** without time-consuming and costly changes.

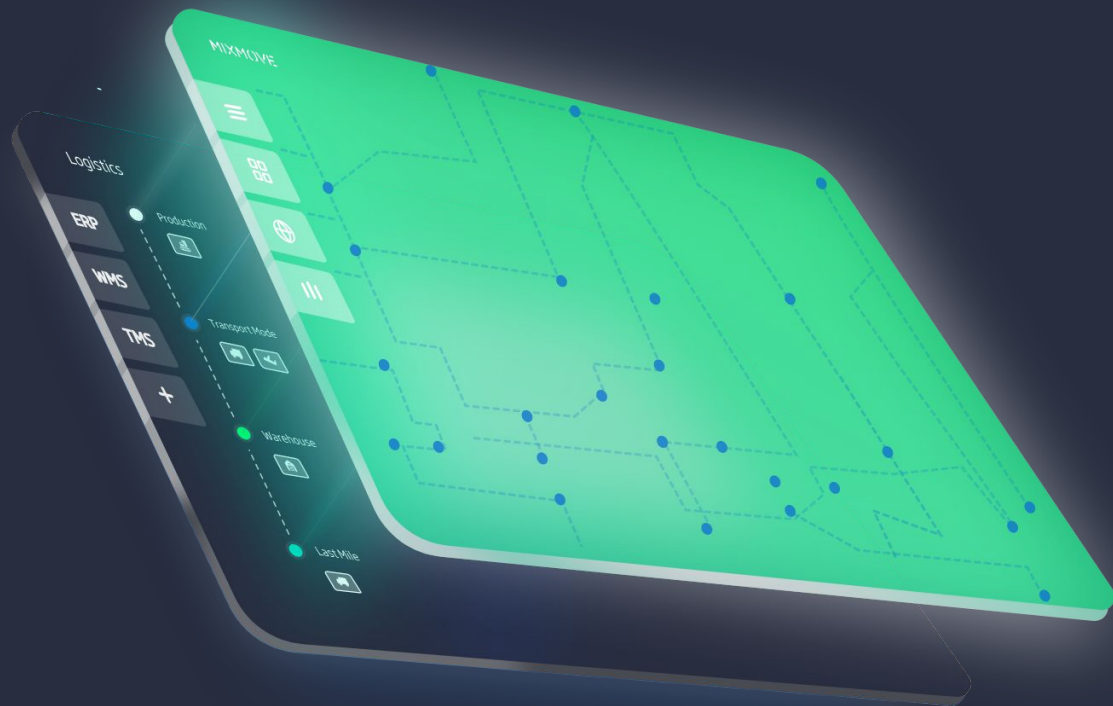




EXISTING LOGISTIC INFRASTRUCTURE

When it comes to logistics, most companies are stuck in the dark.

They use **SILO based applications** that only offer a **one-dimensional view**.



MIXMOVE SILO CONNECTION

MIXMOVE uses the data from different sources & systems and supplements it with fine-granular information on a product level.

MIXMOVE is the world's first Logistic Collaborative Cloud Platform which on a single item (parcel) level:

- Connects all data silos to achieve end-to-end control
- Unites teams and
- Automates processes for multi-enterprise transparency

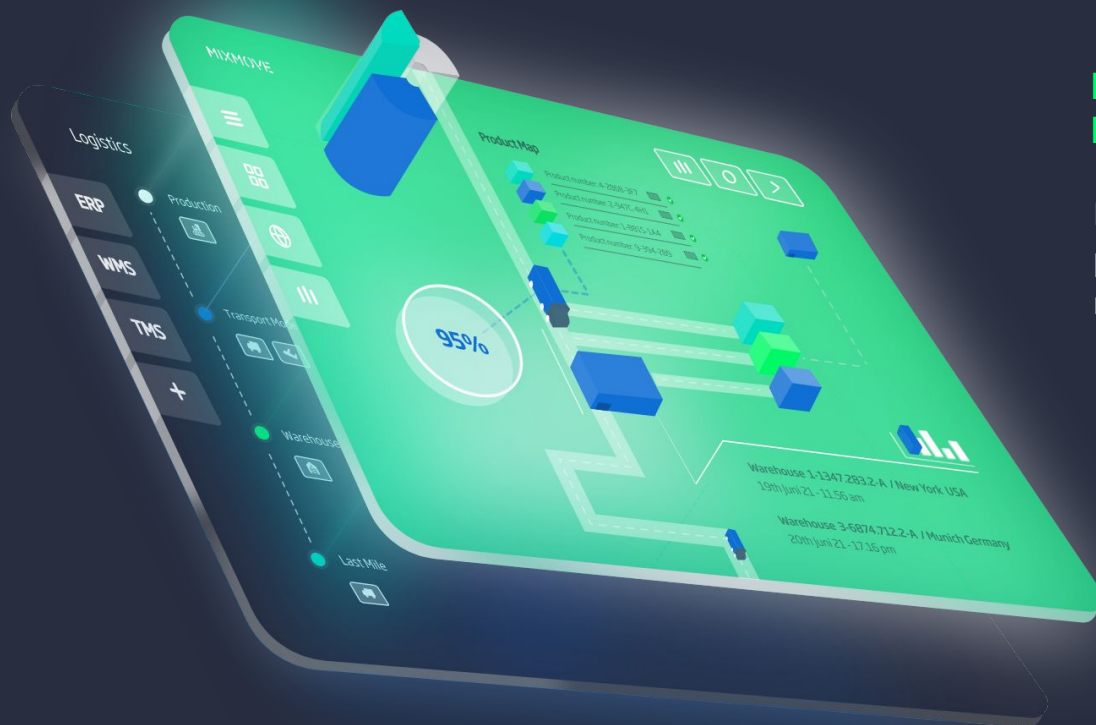
You achieve immediate success without cost-intensive or time-consuming adjustments to your IT landscape.



MIXMOVE VISIBILITY POWER DASHBOARD

One dashboard of truth, with all the data from your different partners and resources to control in end-to-end way every event along your logistics.

Achieve unprecedented real-time visibility of your products and assets, leverage your capacities in the most effective way and benefit from new insights of your logistic network.



MIXMOVE OPTIMIZATION POWER DASHBOARD

MIXMOVE algorithms determine cost-efficient planning and execution of your transport modes, resources and partners.

It allows you to:

- Optimize the utilization of all transport resources in a sustainable way
- Increase the warehouse throughput, and
- Speed up the flow of goods.



MIXMOVE LIGHTHOUSE

An intelligent collaborative cloud platform on top of your existing infrastructure designed to work with all logistic applications and partners.

The platform allows teams to manage, predict and analyze every logistic event on a product level in the best possible way, no matter where it comes from.

This opens up the dynamics and agility required for e-commerce types of flows.

You achieve immediate success without cost-intensive or time-consuming adjustments to your IT landscape

Some numbers



145 000 000 +
Parcels scanned with MIXMOVE
LIGHTHOUSE

3 000 000 +
Parcels scanned monthly

90
Customer Installations

90%
Capacity utilization

35%
Cost Reduction

50%
Proven reduction in CO2 by 3M

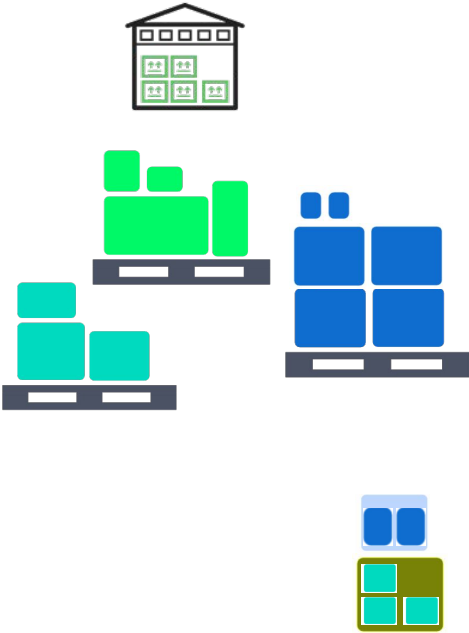


X-docking, Load Optimisation, Delivery Planning

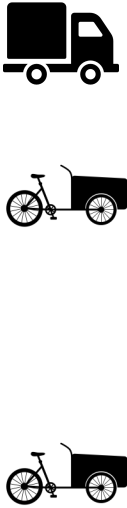
Increase warehouse throughput & load your transport modes to the maximum *



Deconstruction and order consolidation *



Handover to Last Mile carrier or next leg transport mode



* based on pick by product and Advanced Shipping Notifications

MIXMOVE use case



- Up to 165% increase in fill rate
- Up to 50% reduction in carbon footprint
- Up to 35% reduction in logistics costs
- Up to 30% reduction in freight charges
- Up to 25% increase in forecasting accuracy
- Up to 20% reduction in inventory cost
- Up to 10% reduction of the workforce
- Increased customer satisfaction



- Up to 137% increase in productivity
- Up to 50% reduction in hub space
- Up to 90% reduction in emergency hiring



- Up to 15% reduction in distances travelled
- Up to 167% increase in truck fill rates
- Up to 50% reduction in carbon footprint
- Increased management capabilities
- Increased margins
- Increased customer satisfaction

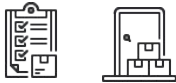
Logistics superpower

-35 %
reduced logistic costs

+90 %
maximum transport fill rate

>100 %
Productivity increase

-50 %
Co2 emission



Production

Planning & Loading

Transport

Warehouse throughput

Road Transport Fleet (Last Mile) & return

- **Automated bookings** of logistic service providers and carriers electronically (API / EDI / E-Mail / Digital Twin)
- **Labeling and traceability** of goods (Products, Cartons, Pallets, Containers, Vehicles)

- **All modes of transport are used and combined** intelligently (own fleet or subcontracts)
- **Maximum transport fill rate**
- **MCC - Multi country consolidation**
- **Grow without additional resources** like drivers & containers
- **Multimodal optimisation**
- **Modular road transport**
- **Increased use of rail and waterborne**
- Using **cargo bikes, robots, and other vehicles**

- **Control and manage** products, parcels and containers in real-time including proof of delivery
- **Predict delivery times** down to the minute
- **Dynamically make changes** when unexpected events occur
- **In transit fulfillment**
- **Faster customs clearance** by knowing all product properties

- **Highest efficiency in sorting and consolidation** processes
- **Traceability of all resources** such as loads, items and containers
- **Automated in- and outbound movement** of goods
- **Fulfillment** by Amazon, Self-Fulfillment, FBM, SFP

- Dynamic and static last mile **delivery planning**
- **Routing and control of all deliveries**, drivers and performances
- **Use of "zero-emission city"** distribution solutions
- **Optimized, consolidated freight flows** on the last mile
- **Analyze and evaluate** all driver data,
- Customer **Track & Trace**
- Efficient **tracking and return** of products and containers

Thank you for your attention!

For any further information regarding our innovative solution, please contact:

Mr. Arjan Kerkhoff
Sales Director

M: +31 6 51 35 92 93
E: arjan@mixmove.io
W: www.mixmove.io

